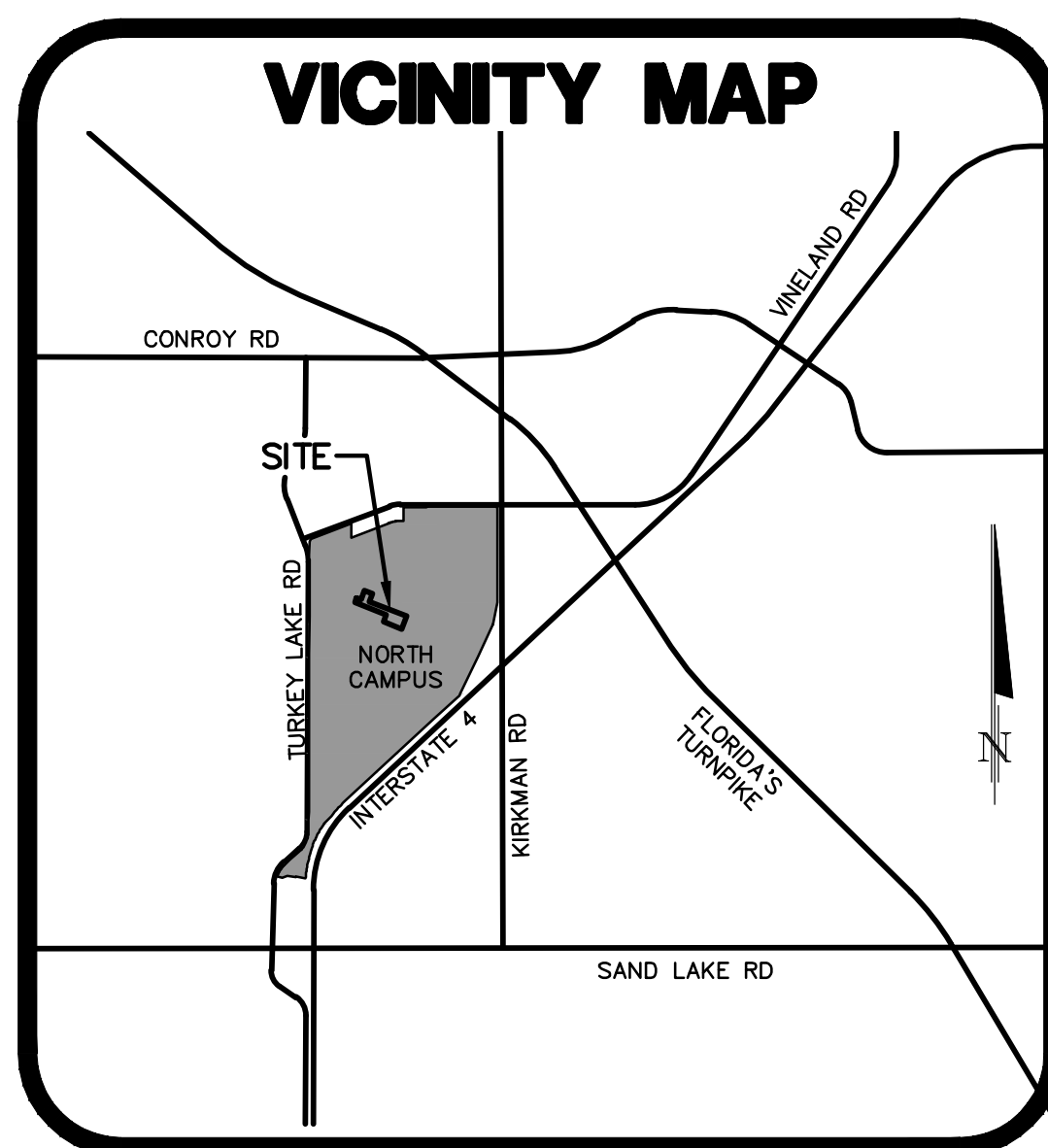
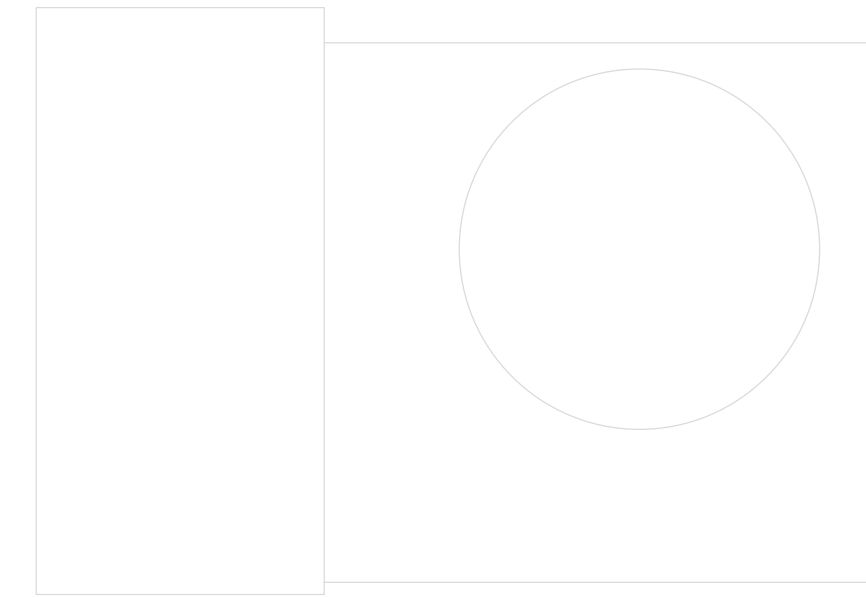


FINAL ENGINEERING PLAN

**UNIVERSAL NORTH CAMPUS
P830 IMPROVEMENTS**

ORANGE COUNTY, FLORIDA

**PREPARED FOR
UNIVERSAL CREATIVE
8523 COMMODITY CIRCLE, SUITE 300
ORLANDO, FLORIDA 32819
321.318.5082
ATTN: JOHNNIE LOY, AIA, NCARB**



**SECTION 13, TOWNSHIP 23S, RANGE 28E
PROPERTY APPRAISER PARCEL ID # 13-23-28-8833-00-120**

DECEMBER 16, 2024

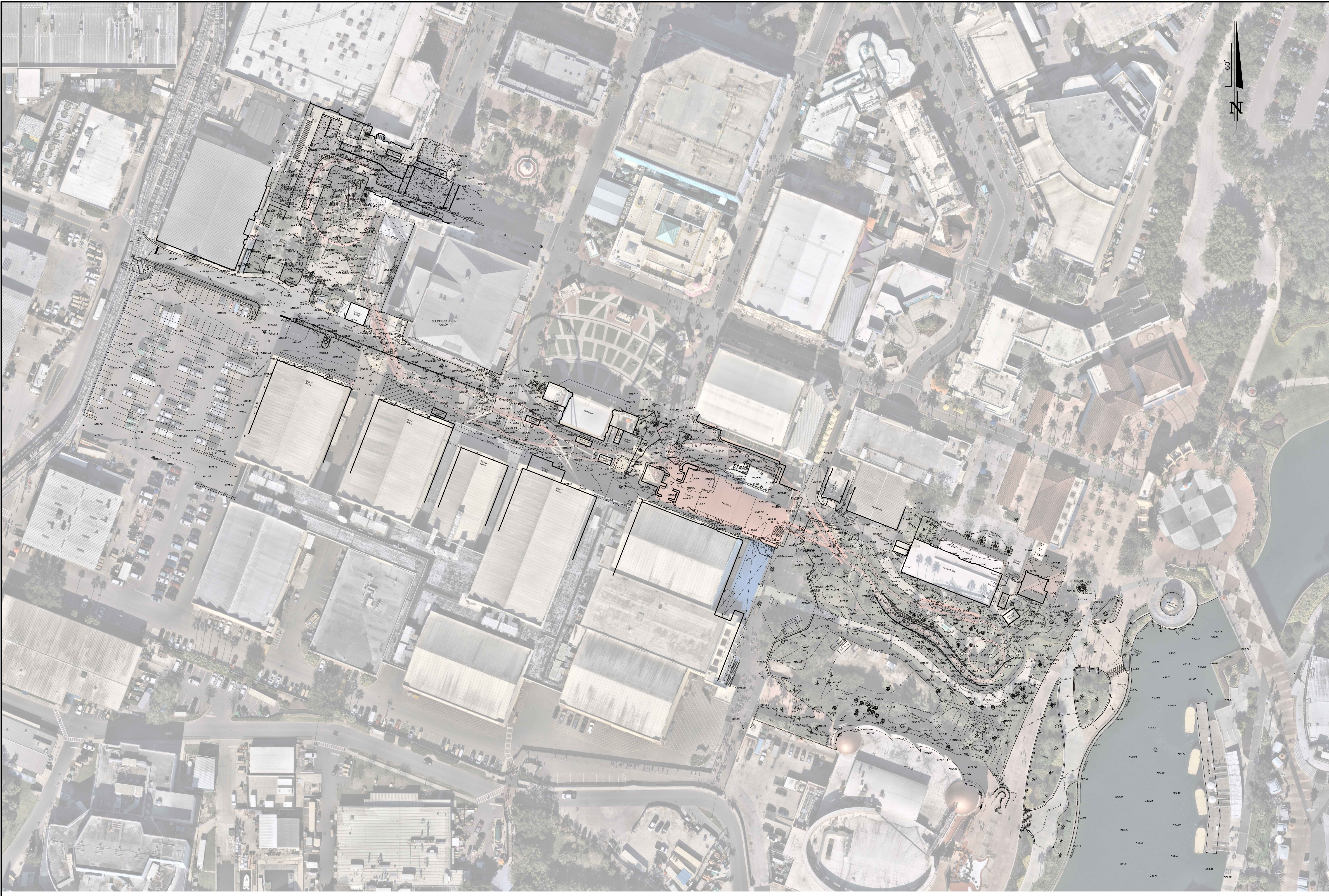
 **McINTOSH ASSOCIATES** ENGINEERS
an *LJA* company PLANNERS
1950 SUMMIT PARK DRIVE, SUITE 600 SURVEYORS
ORLANDO, FL 32810 407.644.4068

SHEET INDEX	
C001	COVER SHEET
C002	NOTES & DETAILS
C011	EXISTING CONDITIONS PLAN
C101	EROSION AND SEDIMENTATION CONTROL PLAN
C301	SITE DRAINAGE IMPROVEMENTS

F:\Projects\21550\CONVOY\Final\830_Improvements\Drawings\830-IMP-COVER.dwg
DONALD W. MCINTOSH ASSOCIATES, INC. RESERVES THE EXCLUSIVE COPYRIGHT AND PROPERTY RIGHTS TO THIS DRAWING WHICH MAY NOT BE REPRODUCED, CHANGED, OR COPIED IN ANY FORM OR MANNER, NOR CAN IT BE ASSIGNED TO ANY PARTY WITHOUT DONALD W. MCINTOSH ASSOCIATES, INC.'S WRITTEN CONSENT.

UNIVERSAL NORTH CAMPUS - P830 IMPROVEMENTS - 24655 - 12/16/24

F:\Proj\2021\21552\EDMS\Final\p830_Improvements\24655-P830IMP-EXIST.dwg
DONALD W. MCINTOSH ASSOCIATES, INC. RESERVES THE EXCLUSIVE COPYRIGHT AND PROPERTY RIGHTS TO THIS DRAWING WHICH MAY NOT BE REPRODUCED, CHANGED, OR COPIED IN ANY FORM OR MANNER, NOR CAN IT BE ASSIGNED TO ANY PARTY WITHOUT DONALD W. MCINTOSH ASSOCIATES, INC.'S WRITTEN CONSENT.



1950 SUMMIT PARK DRIVE, SUITE 600
ORLANDO, FL 32810 407.844.4068

Seals

DATE: _____

FINAL ENGINEERING PLAN
UNIVERSAL NORTH CAMPUS
P830 IMPROVEMENTS
ORANGE COUNTY, FLORIDA

DOCUMENT CHANGES	
Description	Date

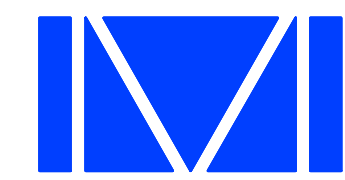
Issue Description	
Issue Date	12/16/24
Project No	24655
Drawn/Designed	CWG / JTT
Checked By	JTT
Drawing Title	

- GENERAL NOTES:
- SEE SITE DATA, DEVELOPMENT NOTES, SPECIFICATIONS & LEGEND SHEETS FOR ADDITIONAL INFORMATION.
 - THE SCALE OF THIS DRAWING MAY HAVE CHANGED DUE TO REPRODUCTION.

EXISTING
CONDITIONS PLAN

Sheet Number
C011
3 OF 5

F:\Proj\2021\121552\EDMS\Final\830_Improvements\24655-P830\MP-EROS.dwg
 DONALD W. MCINTOSH ASSOCIATES, INC. RESERVES THE EXCLUSIVE COPYRIGHT AND PROPERTY RIGHTS TO THIS DRAWING WHICH MAY NOT BE REPRODUCED, CHANGED, OR COPIED IN ANY FORM OR MANNER, NOR CAN IT BE ASSIGNED TO ANY PARTY WITHOUT DONALD W. MCINTOSH ASSOCIATES, INC.'S WRITTEN CONSENT.



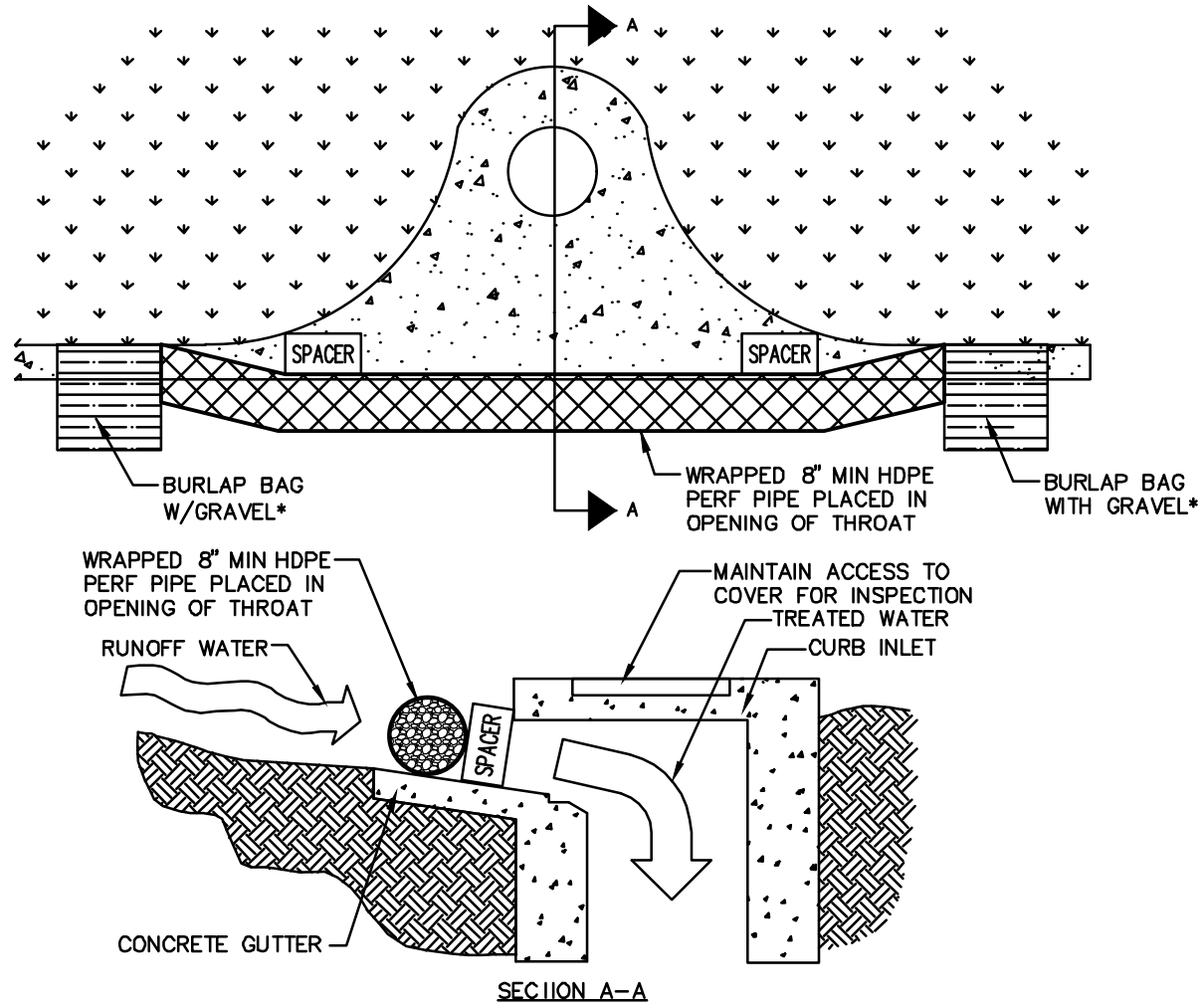
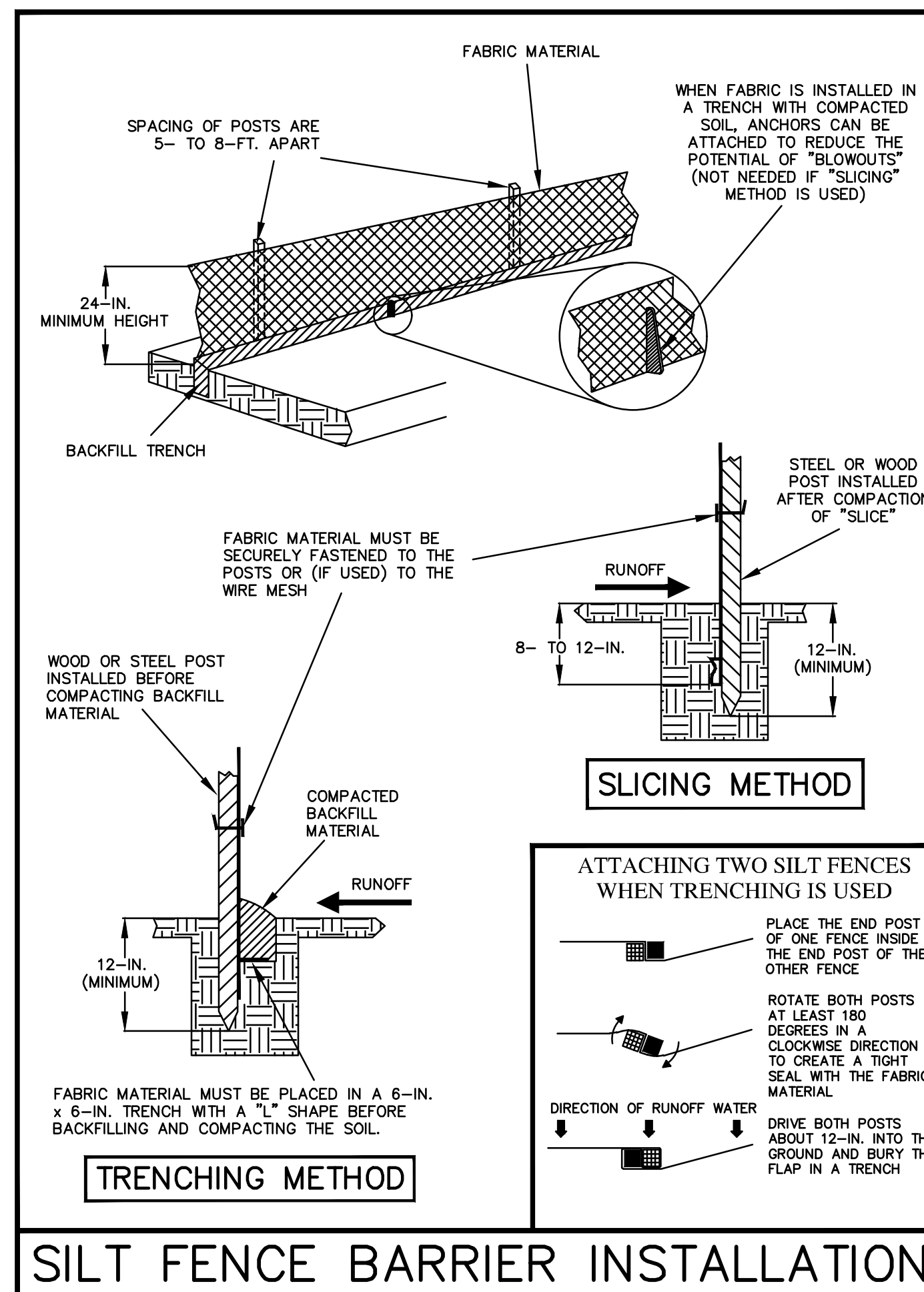
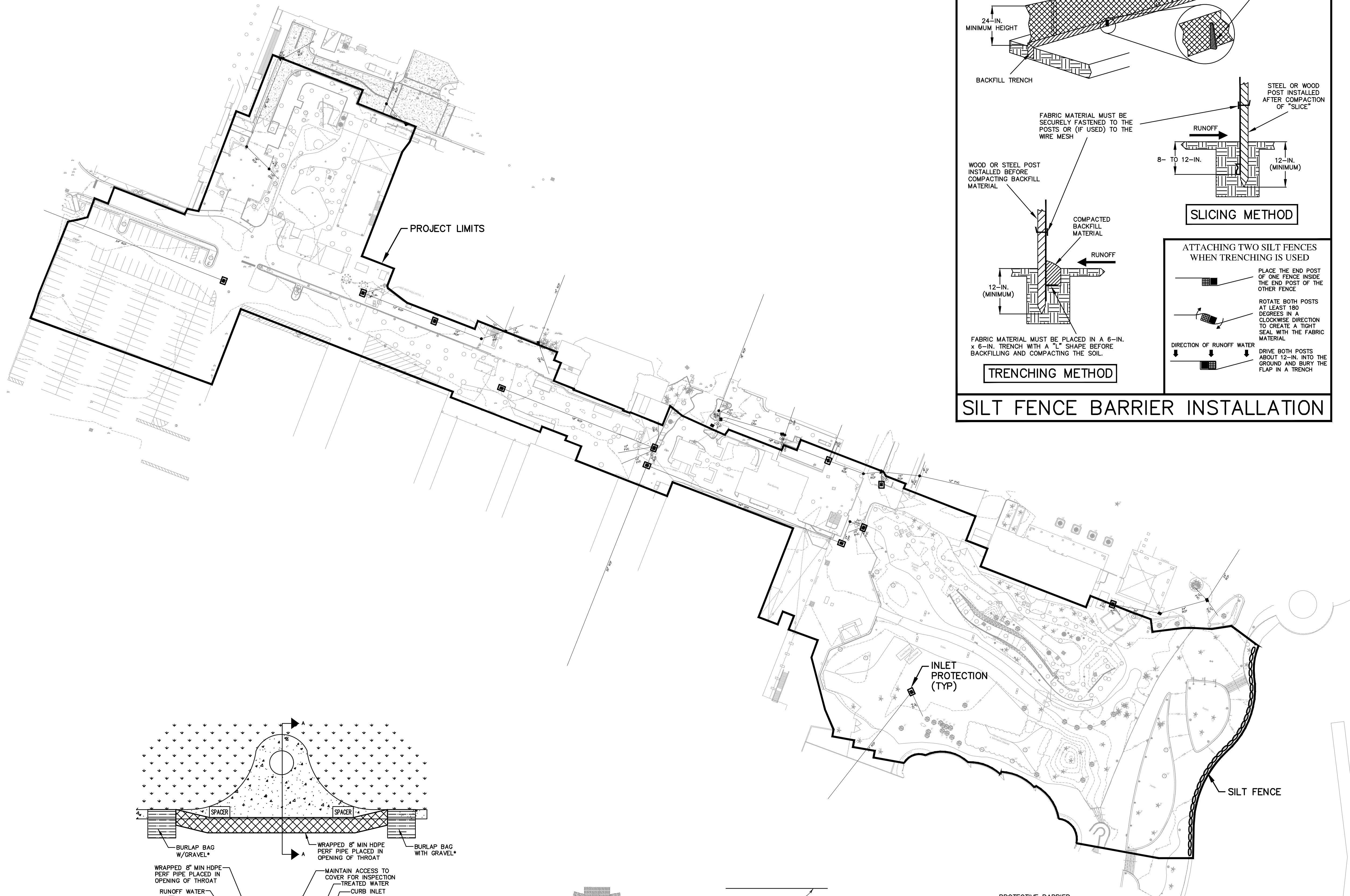
McINTOSH ASSOCIATES
 an LJA company

1950 SUMMIT PARK DRIVE, SUITE 600
 ORLANDO, FL 32810 407.844.4068

Seals

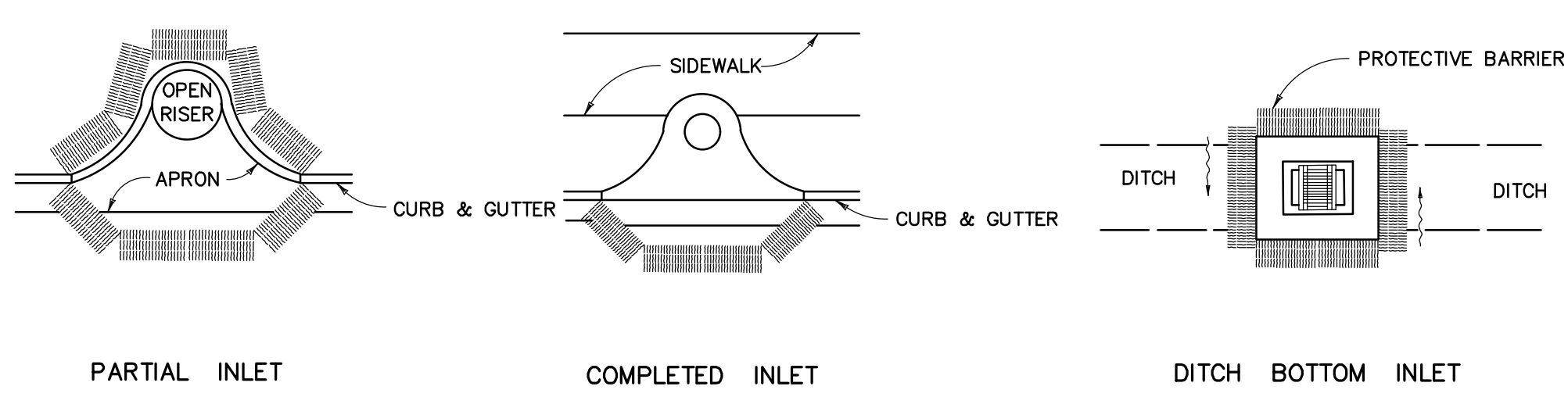
DATE: _____

FINAL ENGINEERING PLAN
 UNIVERSAL NORTH CAMPUS
 P830 IMPROVEMENTS
 ORANGE COUNTY, FLORIDA



NOTE: THE PERFORATED PIPE MUST EXTEND AT LEAST 1' BEYOND THE CURB OPENING ON EACH SIDE AND BE ANCHORED WITH GRAVEL BAGS, OR SIMILAR, ON EACH END. A SPACER (CONCRETE BLOCK OR CITY APPROVED EQUAL) MUST BE PROVIDED FOR BETWEEN THE INLET OPENING AND THE PIPE TO ALLOW FOR OVERFLOW, PREVENT FLOODING AND TO PREVENT THE PIPE FROM FALLING INTO THE INLET.

SOCK DRAIN INLET SEDIMENT FILTER
 NTS



PROTECTION AROUND INLETS OR SIMILAR STRUCTURES

GENERAL NOTES:
 1. SEE SITE DATA, DEVELOPMENT NOTES, SPECIFICATIONS & LEGEND SHEETS FOR ADDITIONAL INFORMATION.
 2. THE SCALE OF THIS DRAWING MAY HAVE CHANGED DUE TO REPRODUCTION.

DOCUMENT CHANGES	
Description	Date

Issue Description	
Issue Date	12/16/24
Project No	24655
Drawn/Designed	CWG / JTT
Checked By	JTT

EROSION AND SEDIMENTATION CONTROL PLAN

Sheet Number
C101
 4 OF 5

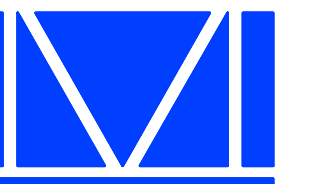
F:\Proj\2021\21652\EDMS\Final\PR30_Improvements\24655-PR30IMP-SITE.dwg DONALD W. MCINTOSH ASSOCIATES, INC. RESERVES THE EXCLUSIVE COPYRIGHT AND PROPERTY RIGHTS TO THIS DRAWING WHICH MAY NOT BE REPRODUCED, CHANGED, OR COPIED IN ANY FORM OR MANNER, NOR CAN IT BE ASSIGNED TO ANY PARTY WITHOUT DONALD W. MCINTOSH ASSOCIATES, INC.'S WRITTEN CONSENT.

SITE MODIFICATION CALCULATIONS EXISTING CONDITIONS

TOTAL LIMITS OF PROJECT AREA	273,226.83 SF (6.27 AC)
LIMITS WITHIN BASIN "B"	95,043.22 SF (2.18 AC)
LIMITS WITHIN BASIN "IOA"	178,183.60 SF (4.09 AC)
PERVIOUS AREA WITHIN BASIN "B"	15,631.30 SF (0.36 AC)
IMPERVIOUS AREA WITHIN BASIN "B"	79,411.92 SF (1.82 AC)
PERVIOUS AREA WITHIN BASIN "IOA"	75,150.58 SF (1.73 AC)
IMPERVIOUS AREA WITHIN BASIN "IOA"	103,033.02 SF (2.36 AC)

GENERAL NOTES:

- SEE SITE DATA, DEVELOPMENT NOTES, SPECIFICATIONS & LEGEND SHEETS FOR ADDITIONAL INFORMATION.
- THE SCALE OF THIS DRAWING MAY HAVE CHANGED DUE TO REPRODUCTION.



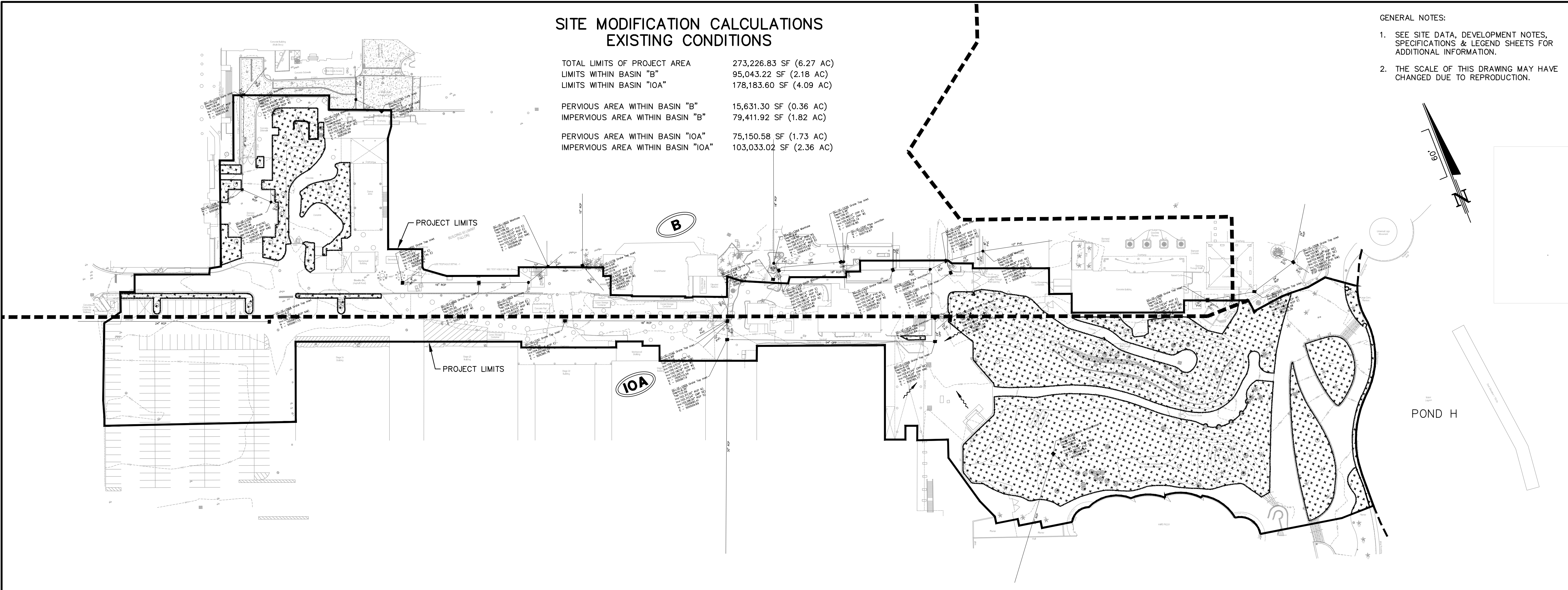
McINTOSH ASSOCIATES
an LJA company

1950 SUMMIT PARK DRIVE, SUITE 600
ORLANDO, FL 32810 407.844.4068

Seals

DATE: _____

FINAL ENGINEERING PLAN
UNIVERSAL NORTH CAMPUS
P830 IMPROVEMENTS
ORANGE COUNTY, FLORIDA



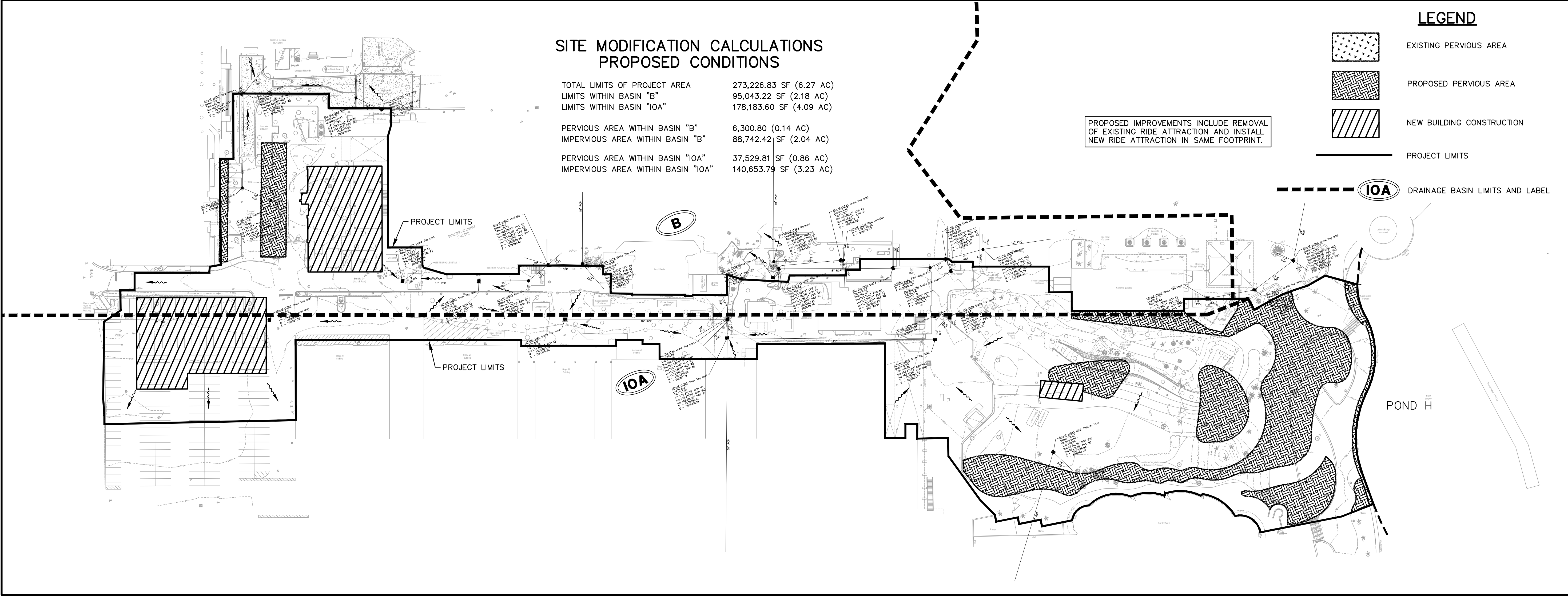
SITE MODIFICATION CALCULATIONS PROPOSED CONDITIONS

TOTAL LIMITS OF PROJECT AREA	273,226.83 SF (6.27 AC)
LIMITS WITHIN BASIN "B"	95,043.22 SF (2.18 AC)
LIMITS WITHIN BASIN "IOA"	178,183.60 SF (4.09 AC)
PERVIOUS AREA WITHIN BASIN "B"	6,300.80 (0.14 AC)
IMPERVIOUS AREA WITHIN BASIN "B"	88,742.42 SF (2.04 AC)
PERVIOUS AREA WITHIN BASIN "IOA"	37,529.81 SF (0.86 AC)
IMPERVIOUS AREA WITHIN BASIN "IOA"	140,653.79 SF (3.23 AC)

PROPOSED IMPROVEMENTS INCLUDE REMOVAL OF EXISTING RIDE ATTRACTION AND INSTALL NEW RIDE ATTRACTION IN SAME FOOTPRINT.

LEGEND

- EXISTING PERVIOUS AREA
- PROPOSED PERVIOUS AREA
- NEW BUILDING CONSTRUCTION
- PROJECT LIMITS
- DRAINAGE BASIN LIMITS AND LABEL



DOCUMENT CHANGES

Description	Date

Issue Description	
Issue Date	12/16/24
Project No	24655
Drawn/Designed	CWG / JTT
Checked By	JTT
Drawing Title	

SITE IMPROVEMENTS

Sheet Number
C301
5 OF 5